



MONTHLY MEMBERSHIP PROGRESS REPORT

District 105SE

Results as of: 6/30/2015

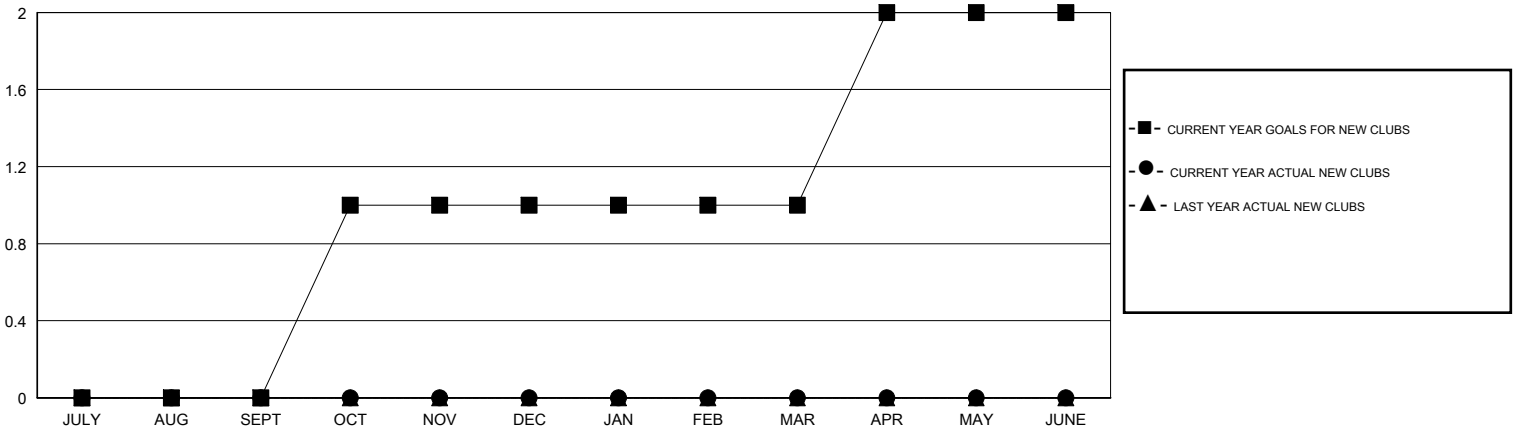
GMT: Elisabeth Haderer

LOCATION ENGLAND

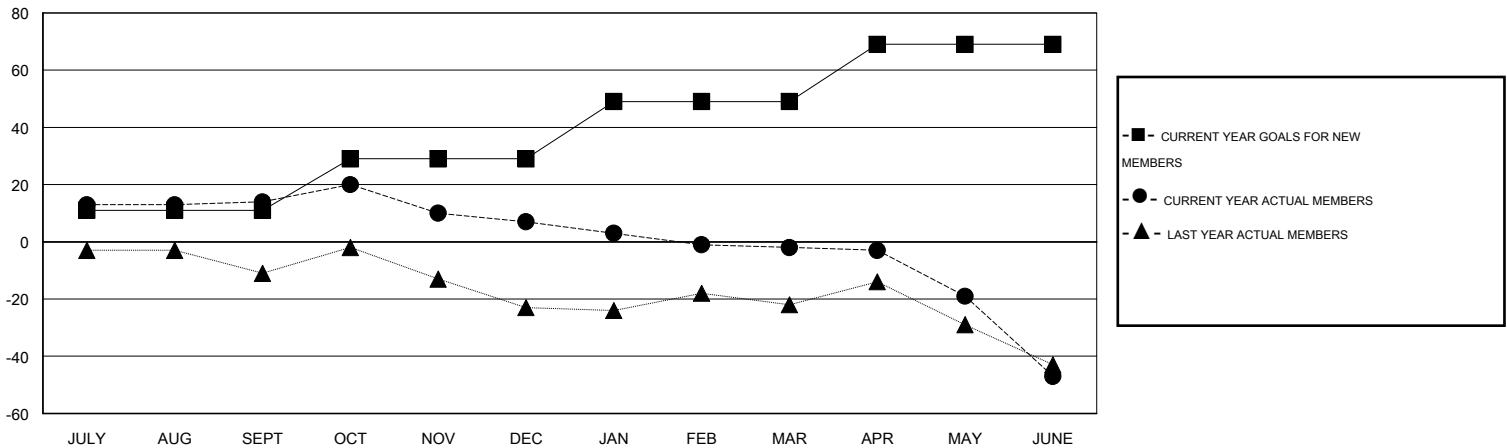
GMT CA 4

Clubs					Members				
RESULTS FOR 2014-2015					RESULTS FOR 2014-2015				
QUARTER	NEW CLUB GOAL	NEW CLUBS	DROPPED CLUBS	NET GAIN/LOSS	QUARTER	NEW MEMBER GOAL	CHARTER AND NEW MEMBERS ADDED	DROPPED MEMBERS	NET GAIN/LOSS
JULY/AUG/SEPT	0	0	1	-1	JULY/AUG/SEPT	11	40	26	14
OCT/NOV/DEC	1	0	0	0	OCT/NOV/DEC	18	38	45	-7
JAN/FEB/MAR	0	0	0	0	JAN/FEB/MAR	20	24	33	-9
APR/MAY/JUNE	1	0	2	-2	APR/MAY/JUNE	20	40	85	-45

GOALS AND ACTUAL NEW CLUBS CUMULATIVE



GOALS AND ACTUAL MEMBERS CUMULATIVE



DROPPED CLUBS: 3	48 CLUBS OF 69 ADDED 1 OR MORE NEW MEMBERS	<u>GENDER DISTRIBUTION</u>			
<u>DROPPED MEMBERS</u>		MALE	1,177 (74.03%)		
DECEASED	25	FEMALE	413 (25.97%)		
CLUB CANCELLED	0	CLICK HERE FOR HEALTH ASSESSMENT DATA			
OTHER	164			FAMILY UNIT MEMBERS	178
TOTAL	189			HEAD OF HOUSEHOLD	89
		NON-HEAD OF HOUSEHOLD	89		